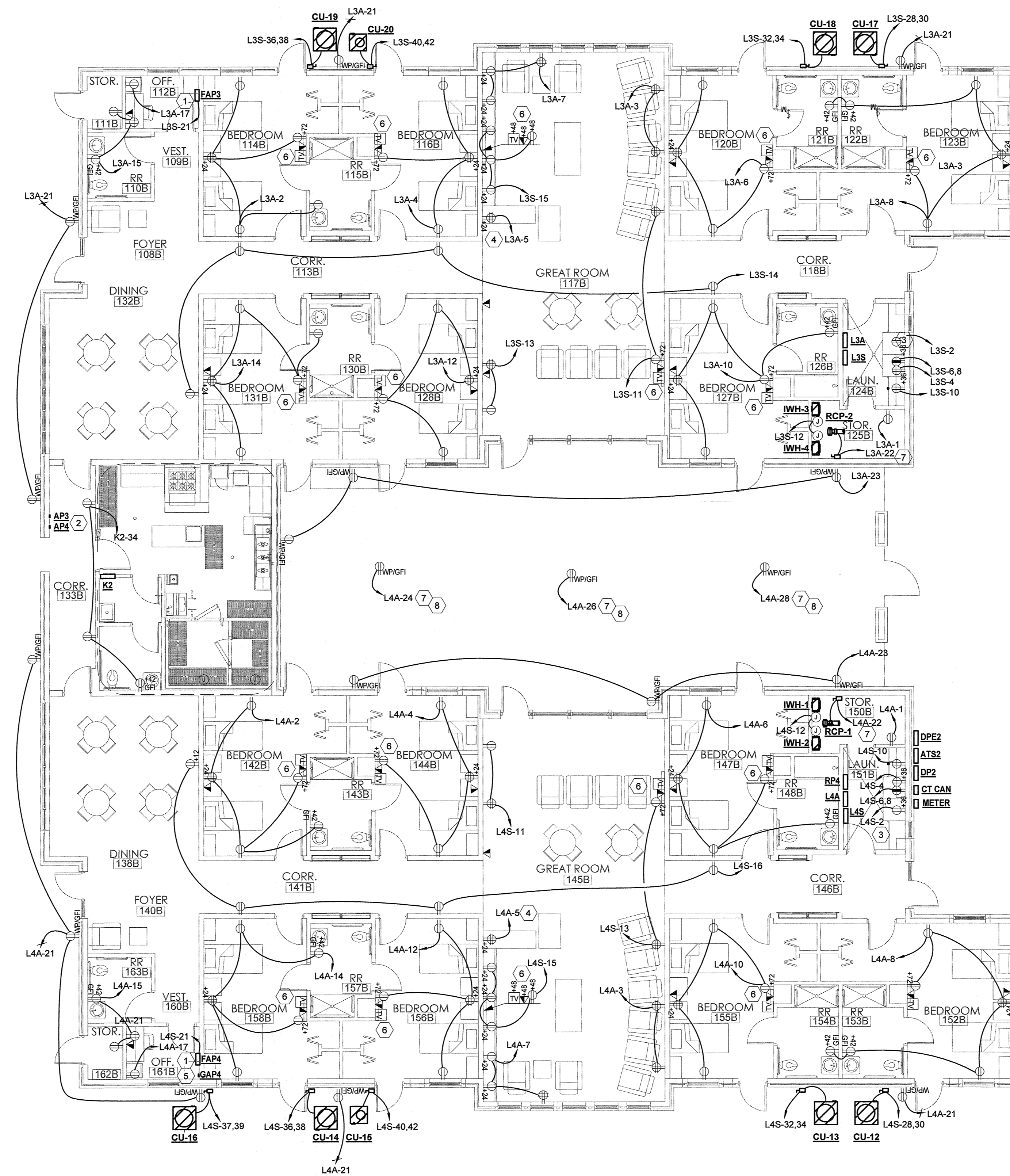


PHASE 1 PHASE 2



1 ELECTRICAL POWER PLAN - AREA B
1/8" = 1'-0"

**LIGHTING AND POWER GENERAL NOTES
(ALL PLAN SHEETS):**

- A. FOR ALL FLUORESCENT FIXTURES WITH DOUBLE-ENDED LAMPS, PROVIDE A DISCONNECTING MEANS PER 2011 NEC ARTICLE 410.130(G)
- B. RECEPTACLES ARE 12" ABOVE THE FINISHED FLOOR OR 6" ABOVE THE COUNTER TOP UNLESS OTHERWISE INDICATED.
- C. COORDINATE LOCATIONS OF ALL OTHER DEVICES AND JUNCTION BOXES WITH THE EQUIPMENT INSTALLER.
- D. CONTRACTOR SHALL NOT INSTALL MORE THAN THREE CIRCUITS (3 PHASE WIRES, 1 NEUTRAL + 1 GROUND) IN A COMMON CONDUIT, EXCEPT WHERE SPECIFICALLY NOTED AND ALLOWED, WHERE MORE THAN THREE CURRENT CARRYING CONDUCTORS (EXAMPLE: 3 PHASE WIRES + 1 CURRENT CARRYING NEUTRAL CONDUCTOR) ARE INSTALLED IN A COMMON CONDUIT, THE CAPACITY OF ALL CURRENT-CARRYING CONDUCTORS SHALL BE DERATED PER 2011 NEC ARTICLE 310-15 (B)(2)(a). EXAMPLE: (6)-20AMP CKTS WITH 8 CURRENT CARRYING WIRES IN A COMMON CONDUIT MUST USE MINIMUM #10 WIRE 70% X 35A = 24.5 AMPS. PROVIDE COMMON TRIP BREAKERS FOR MULTIWIRE CIRCUITS PER 2011 NEC ARTICLE 210.4 (B).
- E. SERVE ALL UNSWITCHED EGRESS LIGHTING FIXTURES FROM UNSWITCHED PORTION OF THE LIGHTING CIRCUIT IN THE GENERAL AREA, FROM PORTION OF THE CIRCUIT AHEAD OF LIGHTING SWITCHES. SERVE BATTERY BALLAST OF SWITCHED EGRESS LIGHTING FROM UNSWITCHED PORTION OF THE LIGHTING CIRCUIT SERVING THE LIGHTING FIXTURES. EGRESS LIGHTING FIXTURES AND EGRESS LIGHTING FIXTURE BATTERY PACKS ARE SWITCHED AT THE PANEL ONLY.
- F. ALL LIGHT SWITCHES TO BE GANGED TOGETHER UNDER A COMMON COVERPLATE WHERE POSSIBLE.

KEYED NOTES

- 1 LOCATION OF FIRE ALARM SYSTEM CONTROL PANEL FOR THIS OCCUPANCY. CONTROL PANEL TO BE INTERCONNECTED WITH OTHER FIRE ALARM SYSTEM CONTROL PANELS SUCH THAT A FIRE IN ONE OCCUPANCY WILL PROVIDE A TROUBLE SIGNAL IN OTHER OCCUPANCIES BUT WILL NOT INITIATE A GENERAL ALARM. COORDINATE EXACT LOCATION WITH FIRE ALARM SYSTEM DESIGNER PRIOR TO FINAL ROUGH-IN.
- 2 LOCATION OF FIRE ALARM SYSTEM ANNUNCIATOR PANELS FOR BOTH OCCUPANCIES IN THIS AREA, TOTAL OF (2) ANNUNCIATOR PANELS IN THIS AREA.
- 3 ALL RECEPTACLES SHALL BE GFI TYPE IN THIS AREA.
- 4 POWER OUTLET FOR FISH TANK. COORDINATE EXACT POWER REQUIREMENTS FOR FISH TANK WITH FISH TANK PROVIDER PRIOR TO ROUGH-IN.
- 5 GENERATOR REMOTE ANNUNCIATOR PANEL. MOUNT ANNUNCIATOR PANEL IN WALL THIS APPROXIMATE LOCATION, EXTEND SIGNAL CONDUIT FROM THE GENERATOR. REFER TO SPECIFICATION SECTION 26 36 12 FOR ADDITIONAL INFORMATION.
- 6 PROVIDE RECEPTACLE, PHONE/DATA OUTLET, AND CABLE TV OUTLET FOR TELEVISION. CONTRACTOR SHALL PROVIDE RECESSED STEEL TV BOX (ARLINGTON # TVBS507 OR SIMILAR) TO ENSURE TV IS MOUNTED FLUSH ON THE WALL. VERIFY EXACT MOUNTING HEIGHT AND LOCATION WITH ARCHITECT/BUILDING REP. PRIOR TO ROUGH-IN AND INSTALLATION.
- 7 CIRCUIT SHALL BE ROUTED THROUGH RELAY PANEL "RP-4".
- 8 APPROXIMATE LOCATION OF POWER CONNECTION FOR FOUNTAIN (TYPICAL ALL FOUNTAINS). COORDINATE EXACT CONNECTION REQUIREMENT WITH FOUNTAIN PROVIDER PRIOR TO ROUGH-IN.

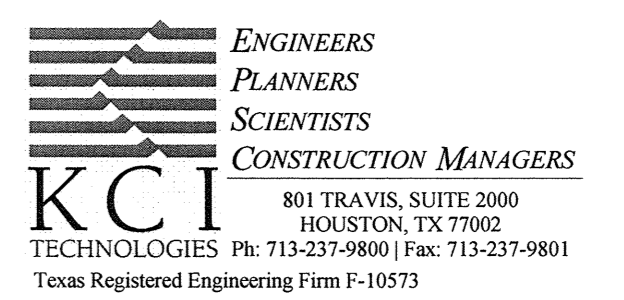
REFER TO ARCHITECTURAL DRAWINGS FOR ADDITIONAL PHASING INFORMATION.

OPTIMUM CARE
SUGAR LAND, TEXAS



Revision Schedule

#	Date	Description
3	09-04-15	PERMIT REVISIONS



Project No.
ELECTRICAL POWER PLAN - AREA B

Sheet No.
E1.02

File Name: C:\DMS\Revit\Projects\7915213.00-Electrical\R15_saad.mahmoud.rvt
User: saad
Date/Time: 9/2/2015 3:50:20 PM